

Approved use

stφrm has been designed for the reduction of fractures of the tibia prior to fixation appropriate for the injury.

Classification

Class I reusable surgical device
CA 008117

Technical Specifications

Dimensions

sterilisation tray (LxWxH) 540 x 265 x 145
assembled (LxWxH) 800 x 350 x 300

Corrections

rotation + 90°
lateral/medial + 60 mm
anterior/posterior + 60 mm
angulation ± 20° (typical)

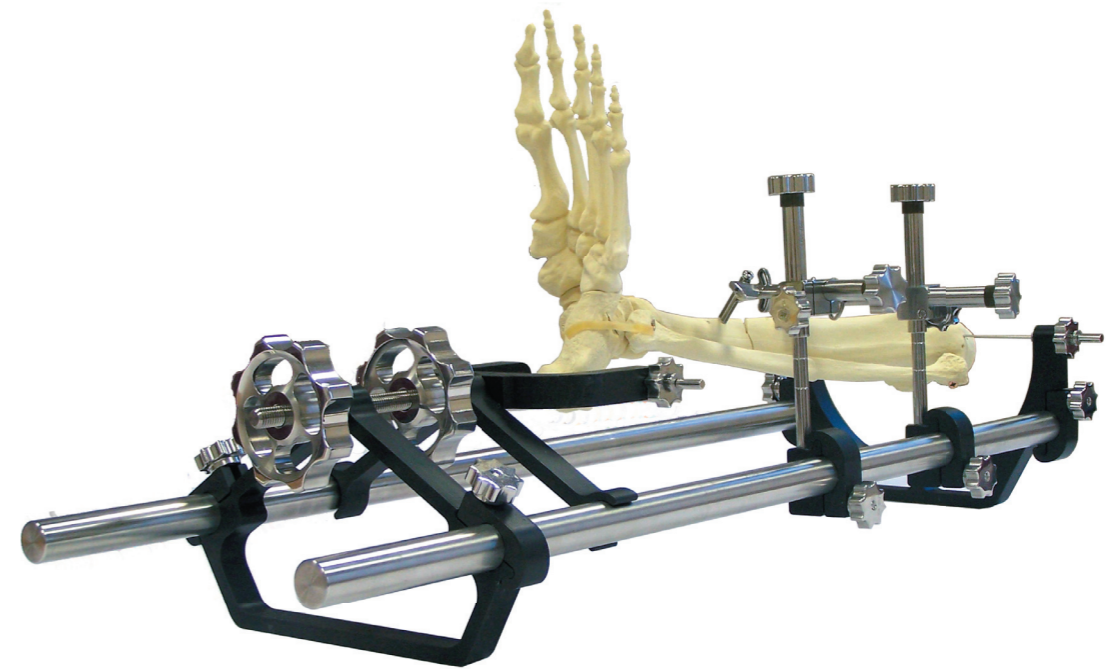
Suggested sterilisation method: Autoclave
Servicing period every 25 sterilisations



when precision matters

s · t · φ · r · m[®]

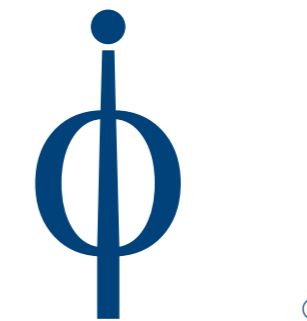
staffordshire orthopaedic reduction machine



Ordering information

Product List

reference number	description
1-0-0	stφrm complete (including tray)
1-0-0F	stφrm frame (including tray)
1-5-0L	fragment manipulator (left)
1-5-0R	fragment manipulator (right)
1-10-0	stφrm operating kit
IPIs	
1-2-2	rotation / traction lock wheel
1-0-4	wire tensioner screw
1-0-5	wire-lock
1-0-6	wire tensioner nut
1-0-3	clamp
1-0-2	clamp locking screw
1-0-10	hand grip



intelligent orthopaedics[®]

Intelligent Orthopaedics Ltd
PO Box 2681, Stoke on Trent, UK, ST4 9BE
+44 (0) 844 800 4405

info@intelligent-orthopaedics.co.uk
www.intelligent-orthopaedics.co.uk

størm has been designed and developed for the reduction of lower limb fractures.

Its use has been shown to result in

- Significantly better fracture reduction than other techniques¹
- Consistent and reproducible operating times¹
- Shortened operating times¹
- Anatomically accurate reduction of fractures¹

størm can be used with internal and external fixation systems.

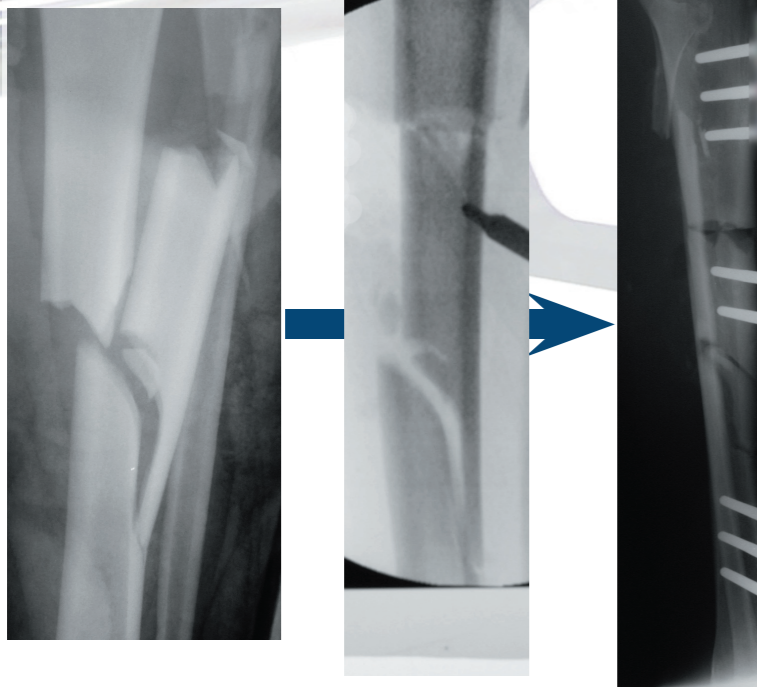
1. A device for improved reduction of tibial fractures treated with external fixation. Proc Instn Mech Engrs, Part H, Journal of Engineering in Medicine, 214(H5), 449-457

Typical indications

Diaphyseal tibial fractures
Distal tibial fractures
Proximal tibial fractures
Delayed treatment

Used with:
IM Nails
Minimally invasive plates
Frame fixation
Mono-lateral fixation

treated 3 weeks post fracture using størm



Anatomically accurate reduction

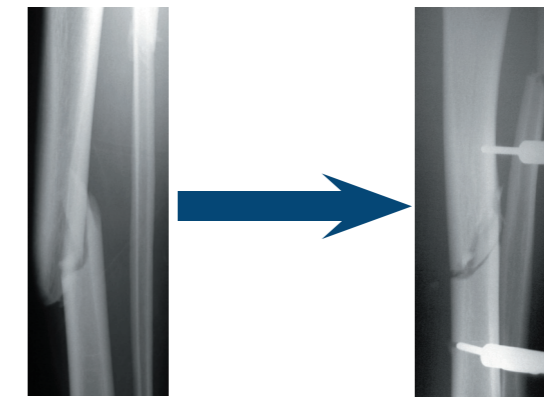
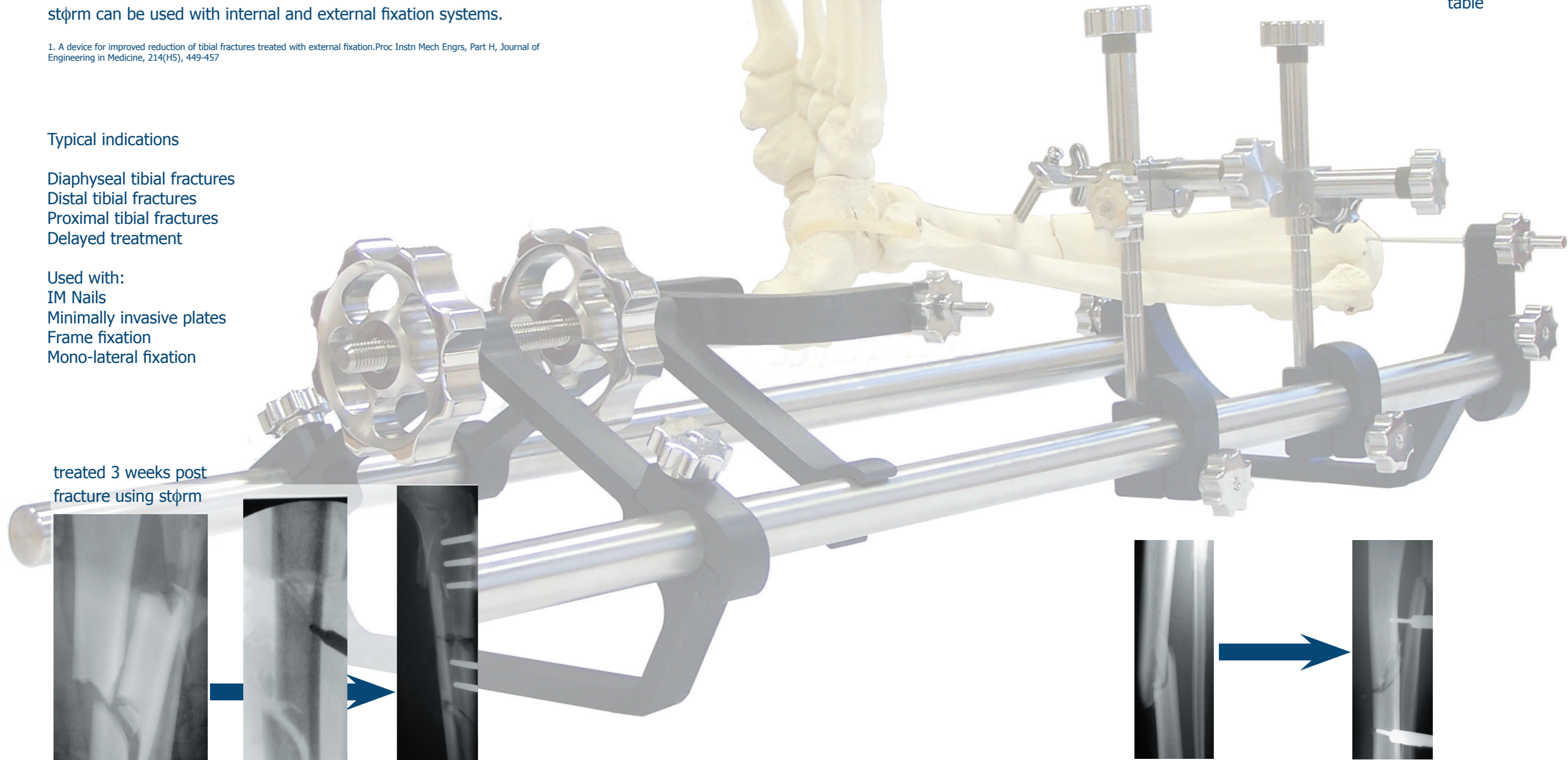
→ Optimises healing environment and minimises post-operative complications

Shortened and reproducible operating times

→ Effective planning of operating theatre use

Simplified operating procedure

→ Consistent results
Allows fixation of choice
Removes the need for a traction table



Designed, developed and tested in conjunction with Staffordshire University, Keele University and the University Hospital of North Staffordshire.

størm is covered by patents, worldwide

intelligent orthopaedics, the intelligent orthopaedics logo and the størm logo are registered trademarks of intelligent orthopaedics ltd

© intelligent orthopaedics ltd 2008